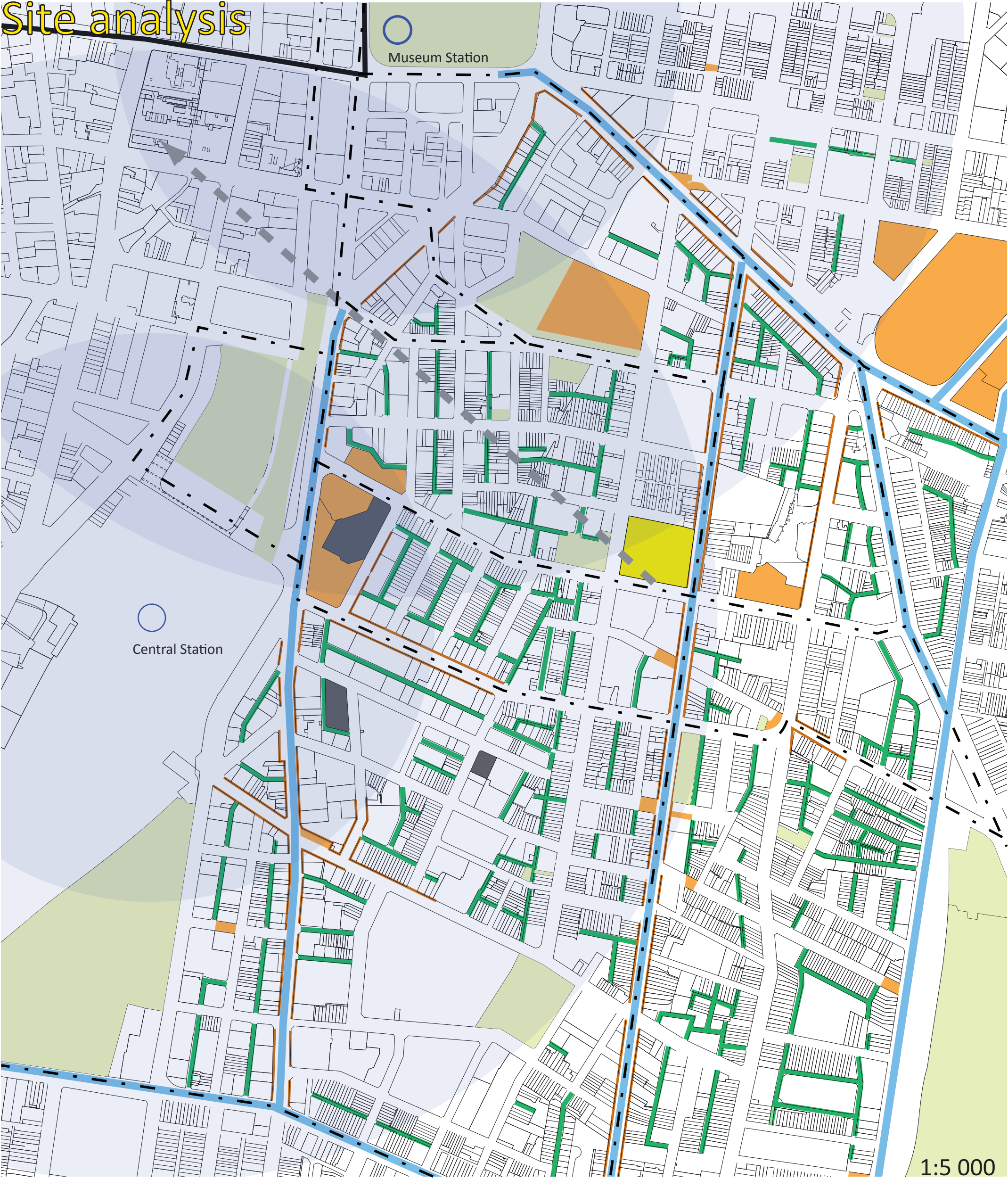


Site analysis



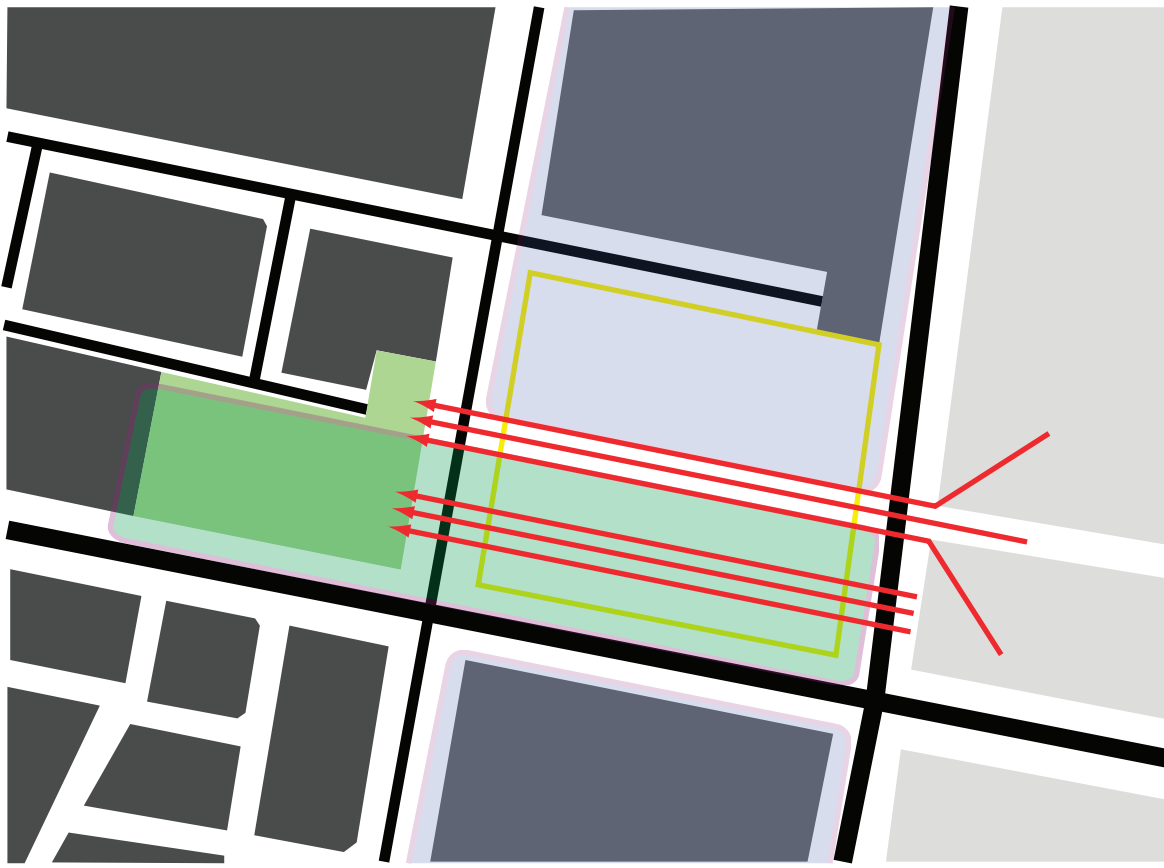
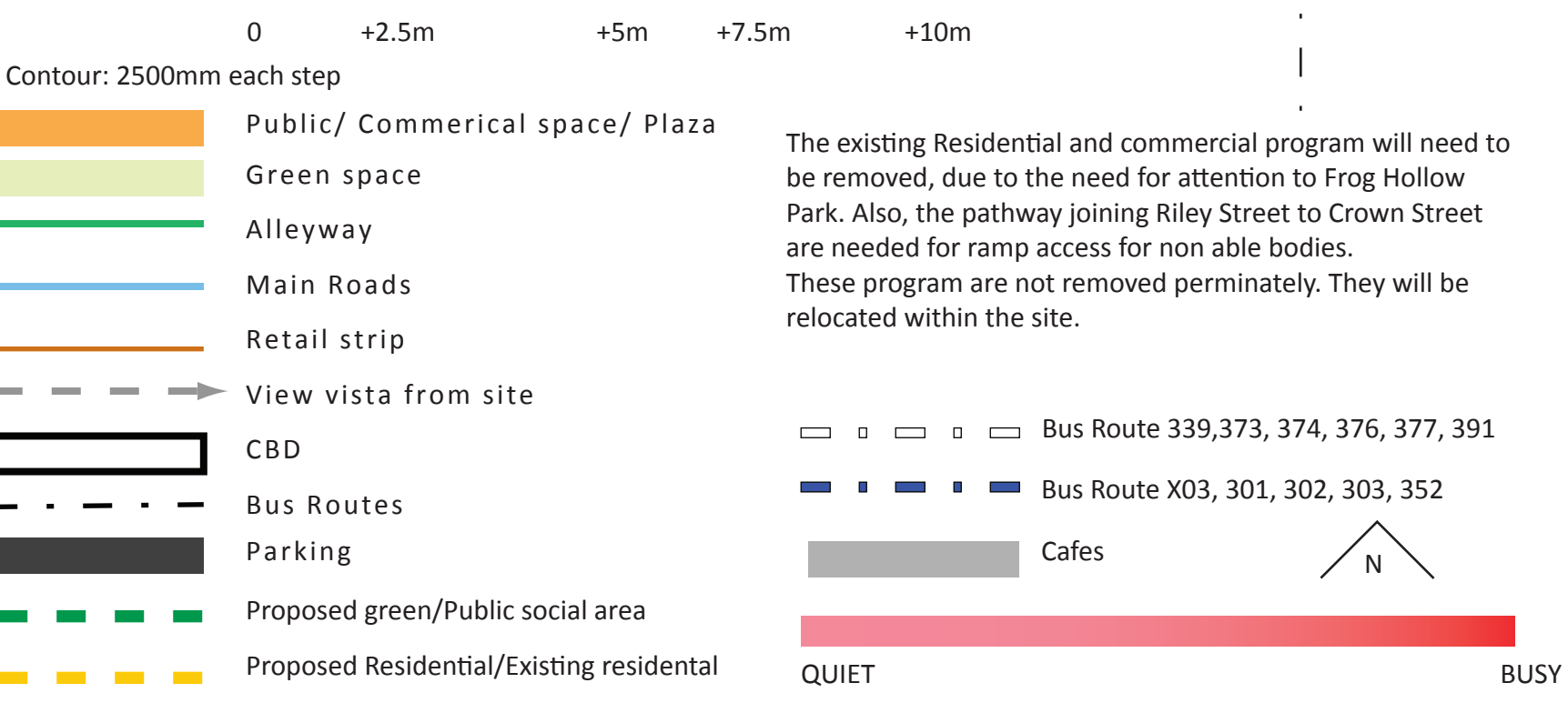
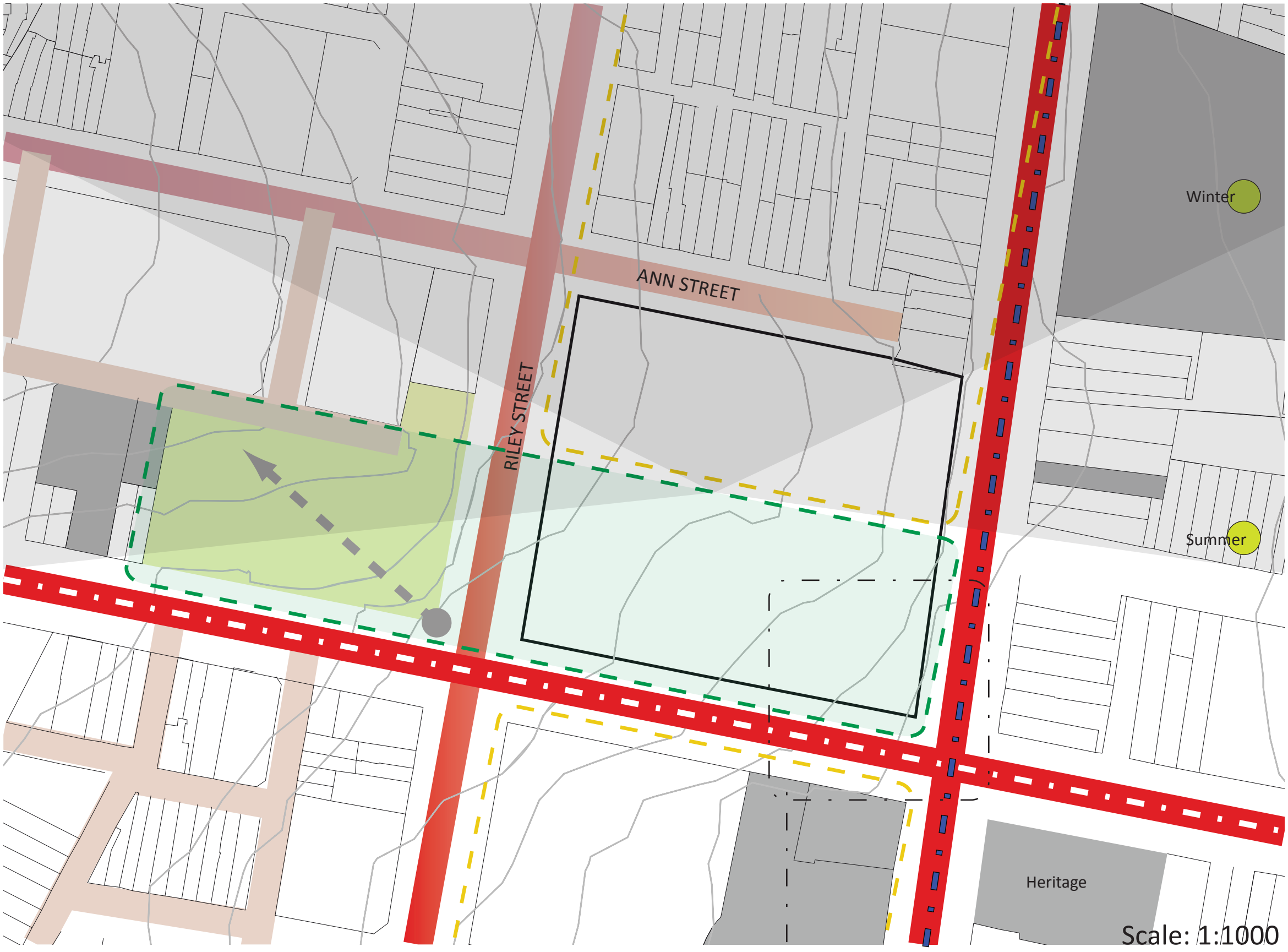
Shigeru Ban , Shutter House for a photographer  
Tokyo, Japan



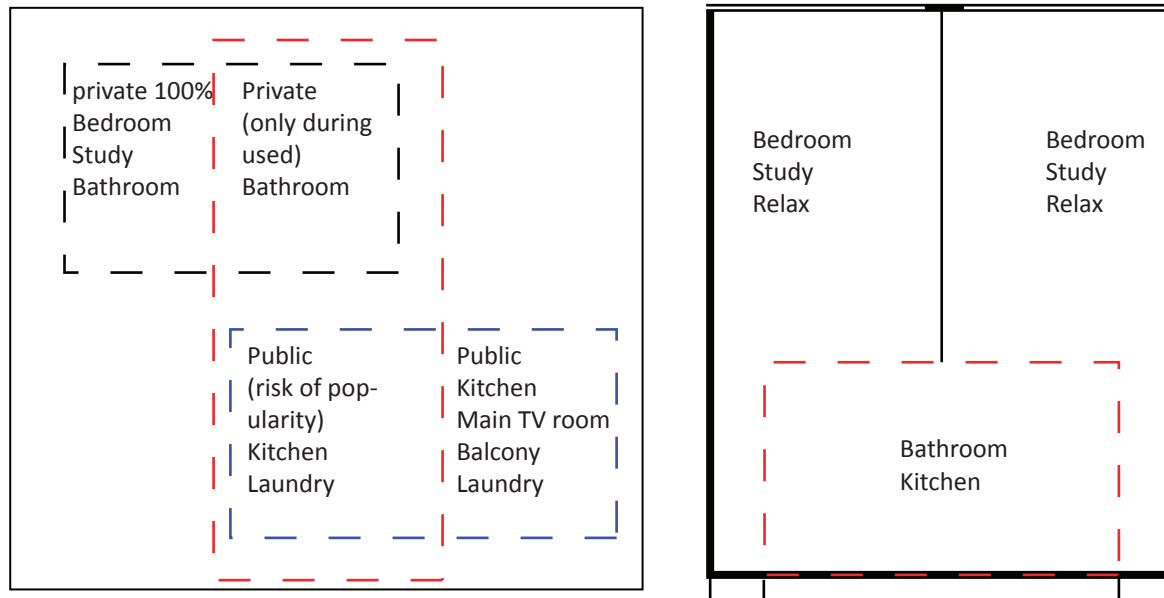
Lorcan O'Herlihy Architects, Habitat



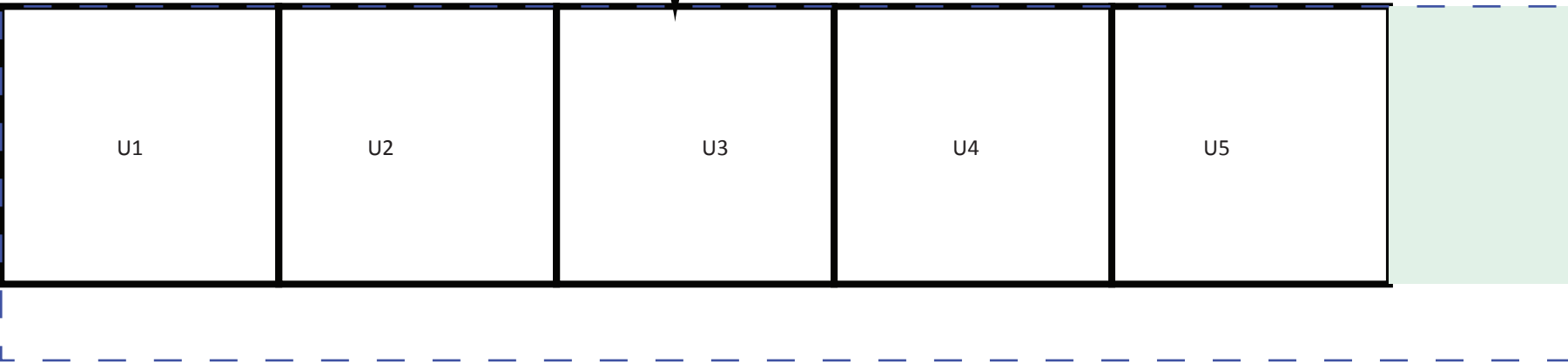
A scheme where the usage of aluminium Shutter to adjust the house, acting as Walls



Main Aim:  
Getting the Park the attention it deserve as well as activating the quieter street for security and neighbourhood vibrancy

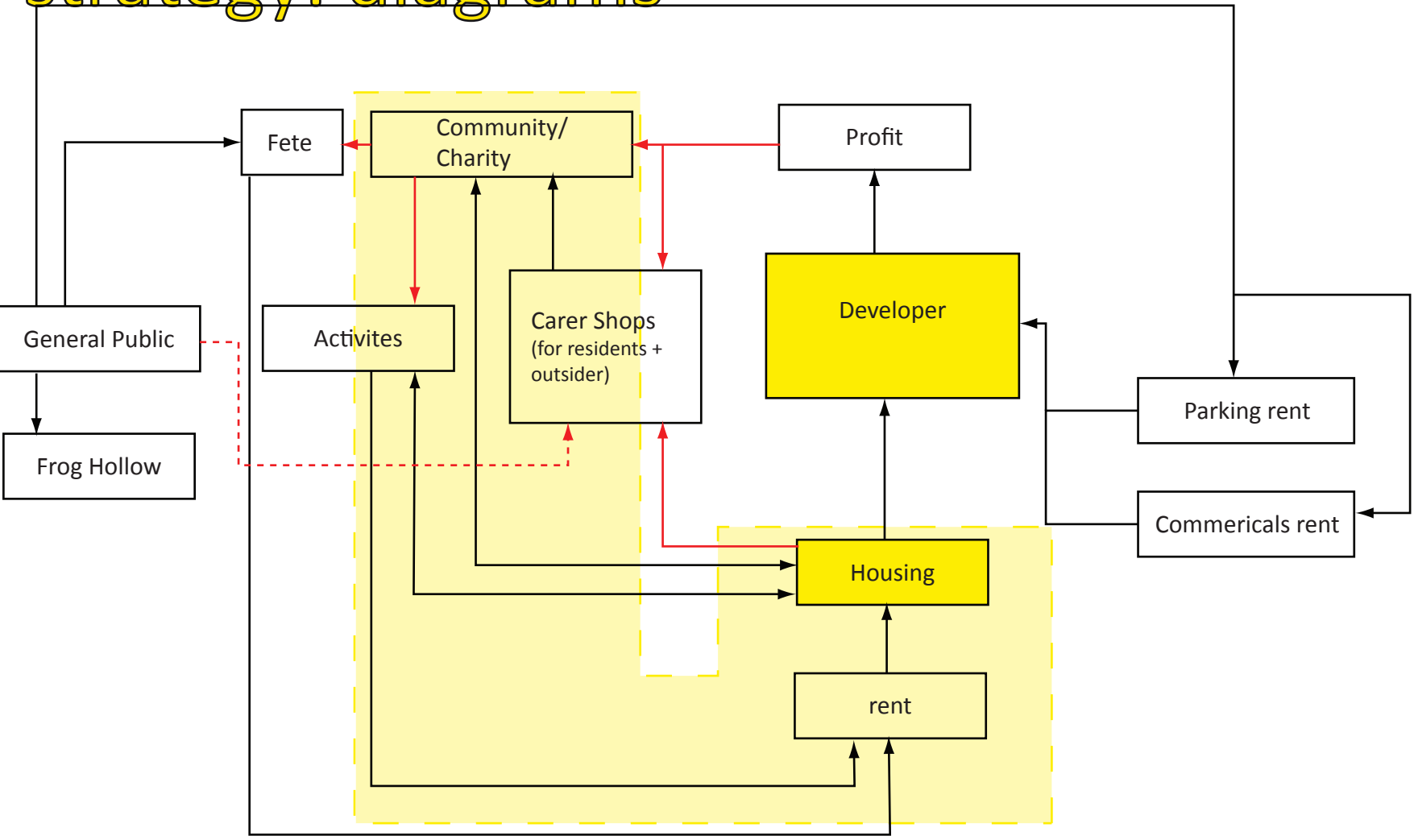


separating what is the most important to what can be shared the most, helps minimised the size for living, providing enough space to live in.



Using dead space: ie spaces not used, for a uniform unit arrangement, will be used as a communal space, either for gatherings or for green space. If everyone was to get a small balcony, it will be to waste of space due to the number of people actually using balconys. Through this, people are able to talk to each to each other as a break out space or a bigger place to do group thearpay excersise as to having a private balcony.

strategy: diagrams



Research:

Renting for commerial	
Surry Hills, Crown Street	
\$900-\$1200 m2 pa	
Renting for Car spaces	
Albion Street	
\$200-\$300 per month	
Average Income:	
Individual:	
In surry Hills:	Average \$784
Australia:	Average \$466
Australia:	
Medium Individual	\$ 1374 week
Medium Family	\$2004 week
Non Able bodied:	
Non Abled body:	\$255 per week
Population:	20% of population and increasing
	84% of the 20% has physical limitation
Income:	Average roughly 30% less and most are Part time

# Affordable Housing;

Non Able Bodies

“ Mr Connellan says the biggest obstacles to housing for people with a disability...are financial support organisations for people with particular disabilities  
For people with disabilities, the inability to find work or the inability of work full time really limits their income and therefore housing affordability becomes a mjoy problem ”